

Frequently Asked Questions

What is the schedule of a student in WBL?

Students attend their WBL placement four half-days per week combined with one half-day at the Career Skills Center.

Are there any staff to help students at work?

Students are supported by an on-site job training specialist employed by BOCES 2. WBL staff also collaborate with classroom staff to support the needs of students.

How do students get to work?

Transportation to and from work are provided by a student's home school district.

What if a student needs to miss a day of work?

Students are encouraged to attend regularly and report their absences directly to the supervisor at their WBL placement. Parents/guardians are requested to report absences to WBL program staff.

Is there a maximum number of hours a student can work at a specific WBL site?

To maintain compliance with Department of Labor regulations for unpaid workers, students may need to change their WBL placement upon accumulation of 215 hours.

What if a student wants to switch WBL sites?

Students will have the opportunity to tour sites of interest as well as practice interview skills.

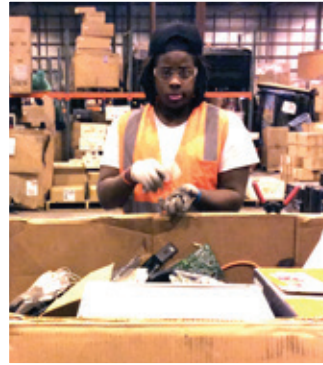
What are the requirements for students to participate in Work-Based Learning?

Students must be referred by their home district, have a work permit if under 18 and complete a WBL application (including medical clearance from school nurse). Students must also fulfill additional requirements specific to WBL placement.



Participating Work-Based Learning Placements

Arc DeliWorks
Bateman Community Living
Brockway Dining Hall (SUNY Brockport)
College Greene Senior Apartments
CoreLife Eatery (Greece)
Elementary Science Program (BOCES 2)
Exceptional Children Learning Center (BOCES 2)
Foodlink
Gardens at Town Center
Goodwill (Brockport & Dewey)
Marshalls (Greece)
Operations & Maintenance Department (BOCES 2)
Rochester Tech Park (BOCES 2)
Rochester General Hospital (Rochester Regional Health)
St. Mary's (Rochester Regional Health)
Sunnking
TJ Maxx (Brockport)
Tops (Gates, Spencerport)
Unity Hospital (Rochester Regional Health)



Work-Based Learning Supervisor

Nicole Littlewood

Phone: (585) 617-2439

WBL@monroe2boces.org

Monroe 2-Orleans BOCES
Exceptional Children Learning Center
3599 Big Ridge Rd.
Spencerport, NY 14559

Work-Based Learning



What is Work-Based Learning?

Work-Based Learning (WBL) is a cooperative effort of Monroe 2–Orleans BOCES, area schools and the community. WBL uses the Community-Based Vocational Education model to provide unpaid work opportunities that enable students to discover career interests and aptitudes. Through WBL, the entire community becomes the classroom as students work towards individual goals while receiving ongoing support, feedback and assessment from professional staff and job training specialists.

By participating in WBL, students may receive school credits and/or necessary hours toward the Career Development and Occupational Studies (CDOS) Commencement Credential.

There are approximately 115 students participating in our WBL program. Worksites include hospitals, apartment complexes, cafés, retail stores and school buildings. Students have the opportunity to try various job duties within their site or other placements within our program.

New WBL opportunities are continually explored and developed throughout the school year to fit the needs and interests of our students. Our staff closely monitor local employment trends so that our program aligns with realistic experiences for students.

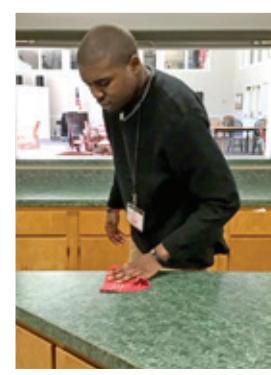
Career Exploration Center

The Career Exploration Center is a short-term, classroom-based placement to prepare students for entry into a vocational program, such as Work-Based Learning. It is designed to support students in setting goals and identifying barriers to success for placement into WBL. Students attend Career Exploration five days a week in morning or afternoon sessions. Students also have the opportunity to earn WBL hours through various activities, such as a student-run café.

Program Goals

Students who participate in Work-Based Learning will:

- Prepare for the world of work through supported, on-the-job experiences
- Develop transferable work-readiness skills
- Learn about expectations that companies have for their employees
- Explore jobs of interest
- Gain self-awareness
- Build positive work attitudes and habits
- Set personal goals related to career development
- Receive ongoing feedback



Evaluation of Work-Readiness Skills

Throughout the school year, students are evaluated quarterly and receive ratings based on their progress of skills identified in the NYS Employability Profile. Students focus on developing these skills and will have the opportunity to receive feedback.

Examples of skills include: Attendance, Workplace Appearance, Communication, Conflict Resolution, Health & Safety and Quality of Work.

Career Skills Center

The Career Skills Center is a classroom-based placement located at the Exceptional Children Learning Center on the Monroe 2–Orleans BOCES main campus. Every student in Work-Based Learning attends Career Skills once per week with their job site cohort. Students receive a grade and may earn up to one elective credit towards graduation. Topics and skills covered in Career Skills are derived from the NYS Learning Standards for Career and Occupational Development Studies.

Standard 1: Career Development

Students will be knowledgeable about the world of work, explore career options, and relate personal skills, aptitudes and abilities to future career decisions.

Standard 3a: Universal Foundation Skills

Students will demonstrate mastery of the foundation skills and competencies essential for success in the workplace.

Connected to these standards, students in Career Skills will:

- Participate in job club to share their job responsibilities as well as discuss any work-related issues at their job sites
- Learn and practice skills needed to obtain a job such as completing job applications, resumes, interviews and more
- Explore career options and apply decision-making skills in selecting a career of interest
- Receive direct instruction on work-readiness skills in which they are evaluated